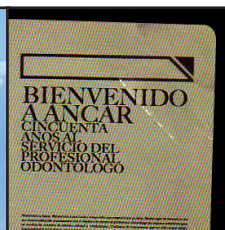
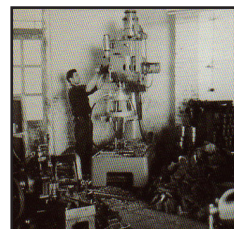


Sit Down Naturally

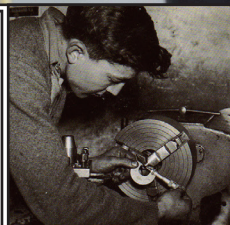
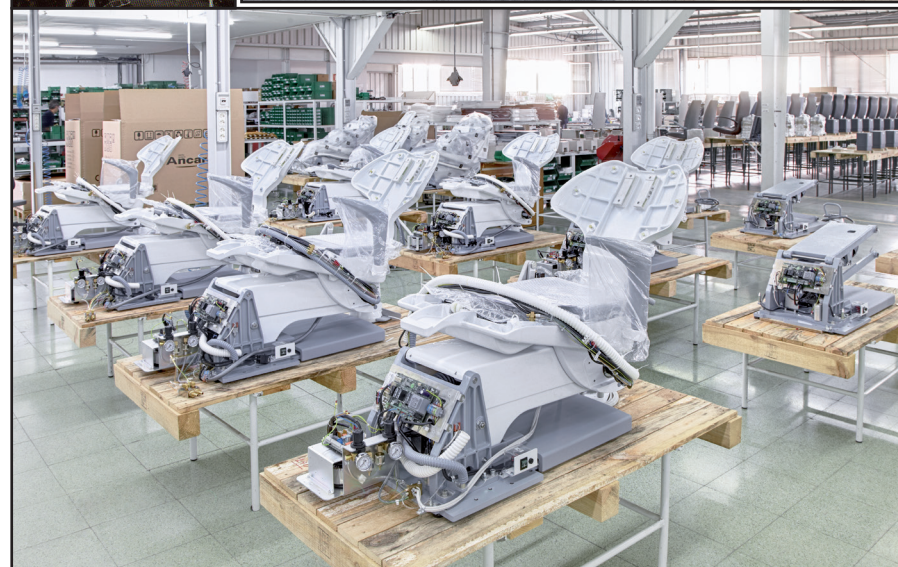
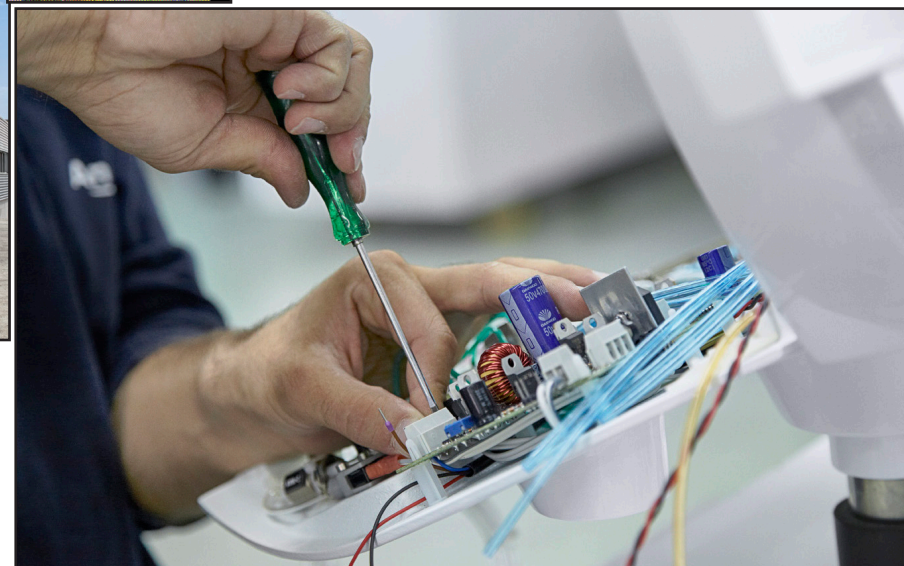
Comfortable
Elegant
Different

Sit Down Naturally

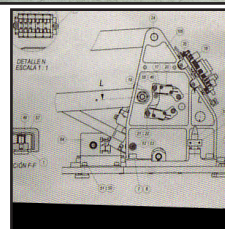




MANUFACTURING TRADITION SINCE 1958.



TECHNOLOGY, SERVICE AND ENGAGEMENT.



WELCOME TO ANCAR

Industrial tradition since 1958

At ANCAR, our working philosophy is very clear: to design the best dental equipment required by professionals. To do this we ground ourselves in 6 values that characterise each one of our creations such as value, ergonomics, technology, design, flexibility and the human touch.

All of these pillars, together with the effort and desire to be the best means that every day we are meeting new challenges and broadening our product range with the most innovative technological advances.

Our inception dates back to 1958, but the year that marks the turning point for ANCAR is 1988, the year we introduced our first dental unit, the Pyrinee model. Back then we could never have predicted, nor imagined the growth and salience that ANCAR would have acquired on the international stage 30 years on.

Getting to this point hasn't been easy, but guided by values such as determination, patience and humility we have managed to establish ourselves and gain recognition in a demanding and competitive market. Similarly, we have laid the foundations for a brand which is consolidated and valued in 32 countries across Europe, the Middle East, Oceania and the Maghreb.

At present, our range is made up of 40 different models, all of which are manufactured with the best materials whilst paying the utmost attention to every small detail. At ANCAR we are aware of the needs of dental professionals and patients, which is why all of our products are designed to meet all essential requirements.

Thanks to this work methodology we are able to build reliable, durable dental equipment manufactured from quality materials, with a focus on improving ergonomics by using the latest technologies.

Ancar's success over the course of its 60 year history isn't down to just one person; everybody deserves the credit! Only true, honest and professional team work is capable of justifying our experience and ensuring our future.



Antoni Carles Pujol
President



Antoni Carles Bosch
General Manager

Series 7

Sit Down Naturally

An exciting line of equipment which guarantees comfort in the most natural way possible.

■ The refined aesthetics of the new S7 is currently a reality, which together with the infinite elegance present in the entire line of Ancar products, manages to stand out once again for its reliability and workplace ergonomics.

In addition to a coordinated structure of the best manufacturing elements together with coverage of the needs for dental practice, the series offers doctors a high quality product with immense work possibilities.

And... of course, it is made of aluminium.

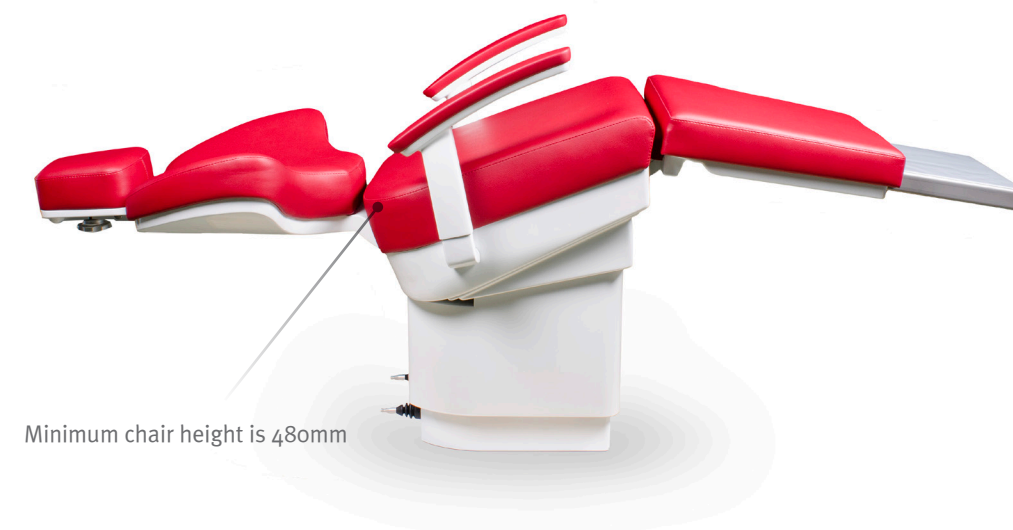
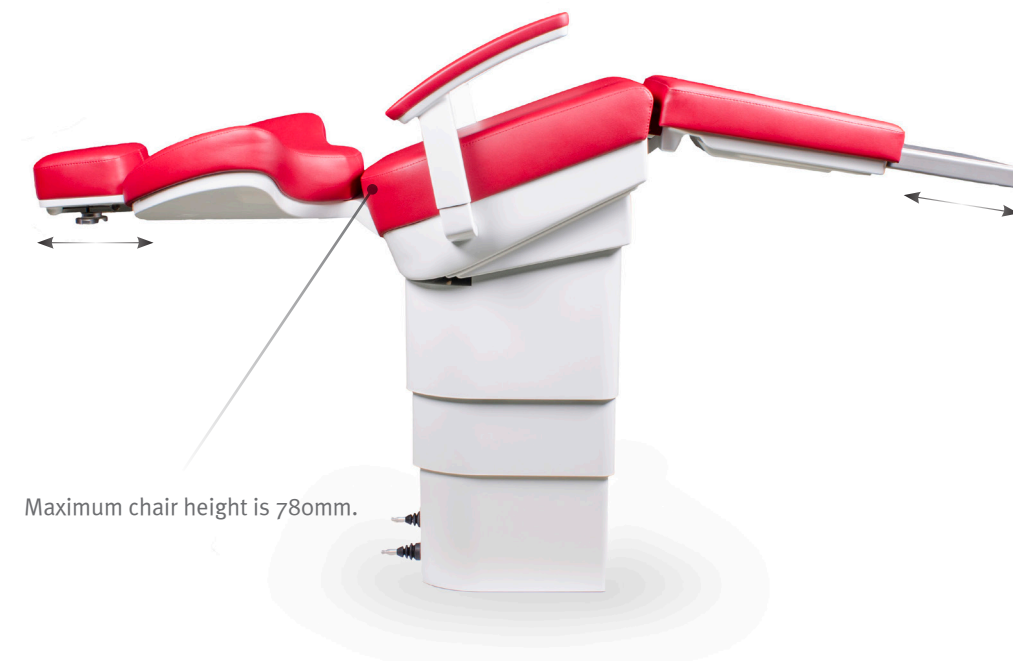
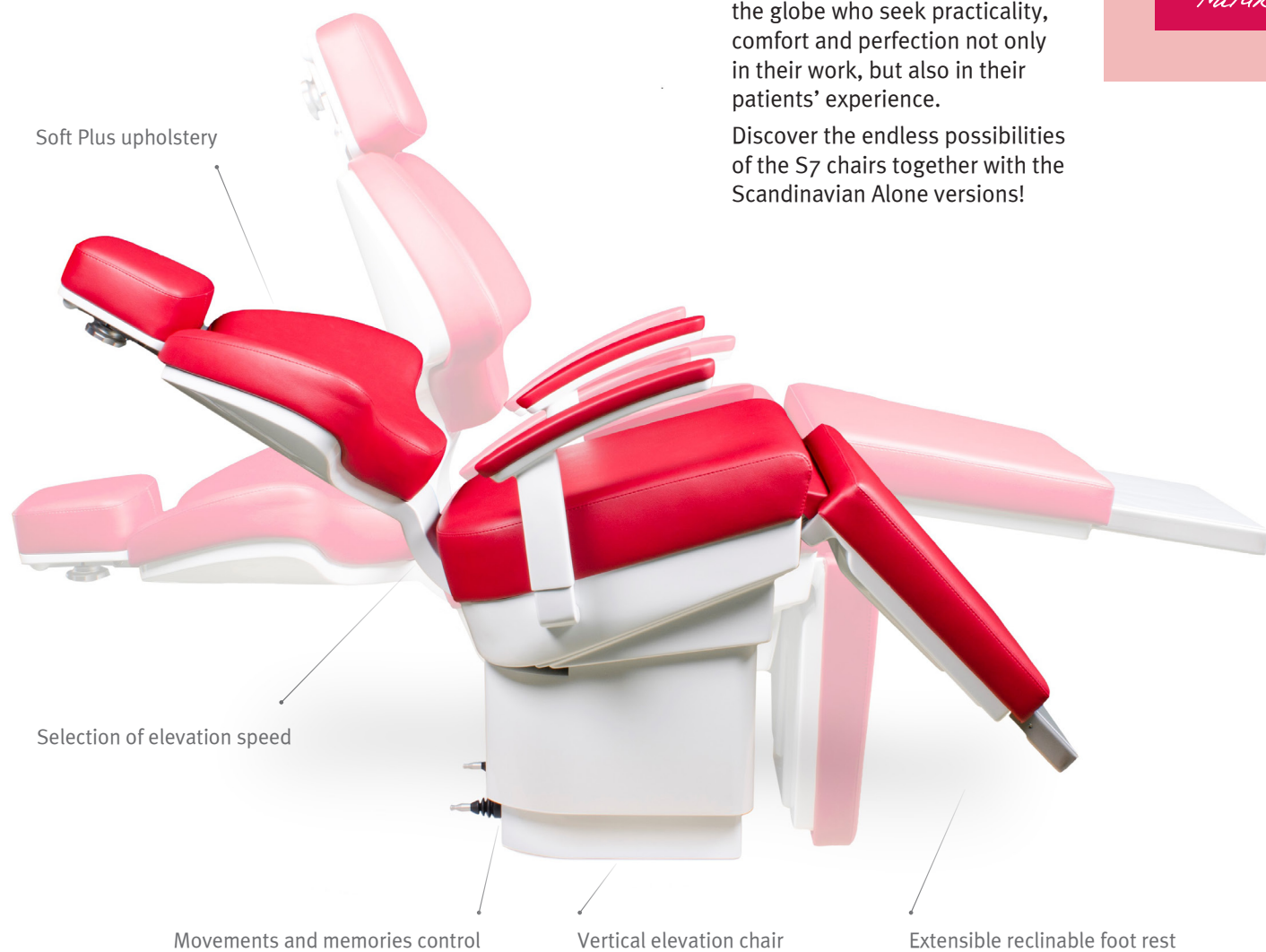
S7 chair

■ The precise representation of elegance mixed with ergonomics, providing an exclusive result for all the dental specialists across the globe who seek practicality, comfort and perfection not only in their work, but also in their patients' experience.

Discover the endless possibilities of the S7 chairs together with the Scandinavian Alone versions!

S7

Sit Down Naturally



Sd-730

*Sit Down
Naturally*

■ Irresistible comfort, as well as the easy accessibility of an S7, come together with the great benefits of Ancar's electronic equipment. Enjoy the advantages of the most advanced medical technology, which we call Touch Expert, Ancar's effort to offer the greatest professional services, maximum precision and informative details that come close to perfection.

S7 chair + Sd-300 *Scandinavian* ALONE



Sd-735

*Sit Down
Naturally*

■ The Sd-735 is the elegant adaptation to the hanging hose version, in order to offer doctors a different working system. This way it will be the doctor who decides which version they like to work with the most during the interventions. The model also includes Touch Expert technology, which you can use to communicate with the patient, which illustrates Ancar's efforts to offer the best professional services possible.

S7 chair + Sd-350 *Scandinavian* ALONE



Sd-738

*Sit Down
Naturally*

S7 chair + Sd-80 *Scandinavian* ALONE (Sd-60 + Cd-80)

■ The Sd-738 model justifies combining the advantages of the S7 chair together with the benefits of the Cd-80 electronic cart, equipped with Touch Expert technology, adapted to the doctor's work, while also reducing the intervention time.



**Technical
data**

S7 chair



Voltage 220-240V
Frequency 50 - 60 Hz
Power 400 W
Electrical protection I type B
Operation type Intermittent
Maximum load (patient) 160 kg
Shift movement 300mm
Automatic shift: leg supplement
1 Joystick seat movements
1 Joystick with 4 position memories
Standard seat fixed to the floor.
Base for chair support not fixed to the floor.

Technical data

S7 chair + Electronic treatment centre

Sd-730: S7+Sd-300 *Scandinavian* ALONE

Sd-735: S7+Sd-350 *Scandinavian* ALONE

Sd-738: S7+Sd-80 *Scandinavian* ALONE (Sd-60 + Cd-80)

Voltage	220 - 240 V~
Frequency	50 - 60 Hz
Air pressure	5,5 Bar
Water pressure	3 Bar
Power	1400 W
Electrical protection	type I
Operation type	Intermittent
Maximum load (patient)	160 kg
Maximum load (instrument tray)	2 kg
Instrument Electric Micromotor	24 Vdc / 65 W
Instrument Mx micromotor	24 Vdc / 60 W (130 max peak)
Instrument light	3V - 7V / 2.5 W
Ultrasound	24 Vac / 35 W
Polymer lamp	24 Vac / 150 W
Syringe 6F	24 Vac / 150 W
Unit standard	93/42/EEC
Insulation type	Ila Class
Unit net / gross weight	BF Type
Dental unit type	340 kg / 400 kg
Installation type	Electronic
Main fuse	Permanent
Movement panel fuse, line 24v	T 6.3 A / 250 V
Primary transformer fuse, 9015136 PCB	T 32 mA / 250 V
24 V ac 1st line protection (yellow/blue)	TT 2.5 A / 250 V
24 V ac 2nd line protection (blue/brown)	Polyswitch RUE400
17 V ac line protection (red/red)	Polyswitch RUE400 + RUE600
Auxiliary outputs 24 Vac	Polyswitch RUE600 + RUE185
	4 x water unit
	3 x instrument tray
	1 x circuit box
Suction connection	500 W / 230 V Relays 20 A / 250 V
Auxiliary contact volt free (circuit box PCB)	Max 250 V / 5 A
Main electro-valves (ref. 9004889)	24 Vdc



WE CARE ABOUT YOU

www.ancar-online.com

Specifications

Sit Down
Naturally



CHAIR FUNCTIONALITIES

- Vertical elevation chair with synchronized back and feet movement.
- Chair that folds at 90°.
- 1 Joystick seat movements
- 1 Joystick with 4 position memories
- Selection of elevation speed for precision treatments.
- Standard seat fixed to the floor.
- Base for chair support not fixed to the floor.
- Automatically extendible, reclining foot rest.

EQUIPMENT FUNCTIONALITIES

- Pedal with chair movement control and instrument control using lever, with water and “chip-blower” selector.
- Speed selector for the micromotor (M40) from 0 to 4,000 rpm. (Selective) and from 0 to 40,000 rpm (Global).
- Adjustment of the water flow for each instrument.
- Micromotor reverse selection and ultrasound power level.
- Automatic ON/OFF lamp in rest and return to spittoon position.
- 3F Syringe installed as standard.
- 6F Syringe. stainless steel installed as standard.
- Optional rapid connection Kit: USB 2.0 Port + air/water intake.
- 230 V auxiliary output.
- Electric micromotor control through potentiometer.
- Up to 8 instruments: 5 in the main tray and 3 in the auxiliary support.
- Multifunction, proportional electronic pedal for water selection, reversal of micro-motor revolution, “Chip-blower” function and chair movement.
- Auxiliary tray (285 x 190 mm) for small hand-held instruments.
- Possibility of exchanging turbine and micromotor (M40) in a single hose.
- Connection box built into the water unit.
- Programmable torch effect in selecting instruments with light.

ERGONOMICS

- Chair movements controlled by pedal and keypads.
- Intuitive and ergonomic “Easy-Touch” control panel, with micromotor reverse indication.
- Arm and instrument tray with mechanical compensation and pneumatic brake.
- Optional narrow backrest.
- Electrically-operated chair with Trendelenburg and 5 position memories (three for working, reset and return to spittoon).
- Water group with 70° turn to make assistant’s work easier.
- Minimum chair height of 480mm.
- Multiposition articulated headrest.
- The vertical elevation system allows for a diaphanous, obstacle-free space under the back rest increasing the work positions for the dentist and assistant.
- Frontal view of the patient.
- Undistorted view of the middle line.
- Greater precision in occlusion examination.
- Better communication (Doctor - Patient).
- Possibility for frontal photography.
- Improves access to persons with advanced age / limited mobility.
- Reduction of the visual impact, thanks to the design.
- Offer of a more spacious image of the surgery.
- Cannula arm with adjustable height (3 positions).

S7

S7+Cd-80

Sd-730

Sd-735

Sd-738

✓

✓

✓

✓

✓

✓

✓

✓

✓

✓

✓

✓

✓

✓

✓

✓

✓

✓

✓

✓

✓

✓

✓

✓

✓

Optional

Optional

Optional

Optional

Optional

✓

✓

✓

✓

✓

✓

✓

✓

✓

✓

✓

✓

✓

✓

✓

✓

✓

✓

✓

✓

✓

✓

✓

✓

✓

✓

✓

✓

✓

✓

✓

✓

✓

Optional

Optional

Optional

Optional

✓

✓

✓

✓

✓

✓

✓

✓

✓

✓

✓

✓

✓

✓

✓

✓

✓

✓

✓

✓

✓

✓

✓

✓

✓

✓

✓

✓

Optional

Optional

Optional

✓

✓

✓

✓

✓

✓

✓

✓

✓

✓

✓

✓

✓

✓

✓

✓

✓

✓

✓

✓

✓

✓

✓

✓

✓

✓

✓

✓

✓

✓

✓

✓

✓

✓

✓

✓

✓

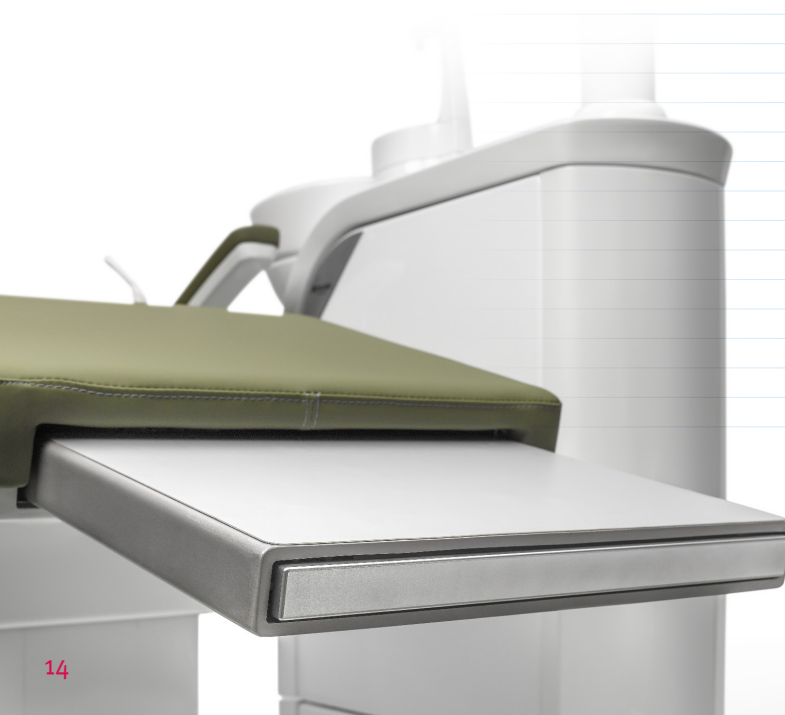
✓

✓

Specifications

Sit Down
Naturally





	S7	S7+Cd-80	Sd-730	Sd-735	Sd-738
MATERIALS					
• ALUMINIUM CORE: unit, chair and pedal manufactured in light anti-corrosive aluminium alloy.	✓	✓	✓	✓	✓
• Water box lids in ABS.			✓	✓	✓
• Removable, autoclavable, porcelain mouthwash cup.			✓	✓	✓
• High quality, flame retardant, phthalate-free, “Soft plus” upholstery.	✓	✓	✓	✓	✓
SAFETY FEATURES					
• Back, folding leg rest, extendible foot rest, movement joysticks.	✓	✓	✓	✓	✓
• On auxiliary cannula support.			✓	✓	✓
• On movement keypads.		✓	✓	✓	✓
• On optional instruments (turbine, micromotor and ultrasound) through adjuster pedal.		✓	✓	✓	✓
• Unit designed according to medical devices directive 93/42/CEE, whose design and construction meets the applicable dental product safety and IEC norm standards.	✓	✓	✓	✓	✓
• In selecting a second instrument.			✓	✓	✓
HYGIENE					
• Autoclavable silicone instrument support.			✓		
• Dismountable and thermo-disinfectable suction hoses.			✓	✓	✓
• Easy-clean suction filter.			✓	✓	✓
• Rotary instrument oil recuperator.		✓	✓	✓	✓
• “WEK” water decontamination system for instrument hoses.			Optional	Optional	Optional
• H1 disinfection system for suction hoses.			Optional	Optional	Optional
• Removable and autoclavable mouthwash tray at 135°.			✓	✓	✓
• Removable cup tap for easier cleaning.			✓	✓	✓
• Amalgam recovery and dry or damp suction systems.			Optional	Optional	Optional
PROGRAMMING					
• Electronic unit controlled by microprocessor with “Touch Expert” display.		✓	✓	✓	✓
• “Autotest” of the unit at start-up.		✓	✓	✓	✓
• Identification of the dental center, date and time.		✓	✓	✓	✓
• Programming for 4 different users and configuration of instruments for each one.		✓	✓	✓	✓
• Programming of the ultrasound work parameters in ENDO, PERIO, SCALER, work range, and instrument light intensity.		✓	✓	✓	✓
• Adjustment of the micromotor’s work parameters (with ENDO functions): torque control in Ncm, direct or reverse rotation, irrigation mode (spray/water/air), type of counter-angle and two types of speed: from 200 to 400,000 rpm and from 100 to 4,000 rpm		✓	✓	✓	✓
• Graphic display of ultrasound power level and real turbine working speed.		✓	✓	✓	✓
• Statistics about the unit’s use: chair movements, instrument use, frequent warnings and recent warnings.		✓	✓	✓	✓
• System for detecting and controlling faults or warnings.		✓	✓	✓	✓
• Choice of language for working.		✓	✓	✓	✓
• Countdown function.		✓	✓	✓	✓
• Adjustment of the cup water filling time and water in mouthwash tray for joint or independent work.		✓	✓	✓	✓
• “Update Device” System: incorporates the latest updates from programming including years after its purchase.		✓	✓	✓	✓



Sit Down Naturally



QS LEA 047.V10

Subject to design and/or specifications changes without prior notice.
Made in Europe.

Antoni Carles, S.A.

Volta dels Garrofers, 41-42 Polígono Industrial "Els Garrofers"
08340 Vilassar de Mar (Barcelona-SPAIN)

Tel. (34) 93 754 07 97 Fax (34) 93 759 26 04

www.ancar-online.com / e-mail: ancar@ancar-online.com